



Let's save agriculture for next generation

G-VIN GROUP



Quality Certificates



WHAT WE ARE

G-VIN PRODUCTS LIMITED

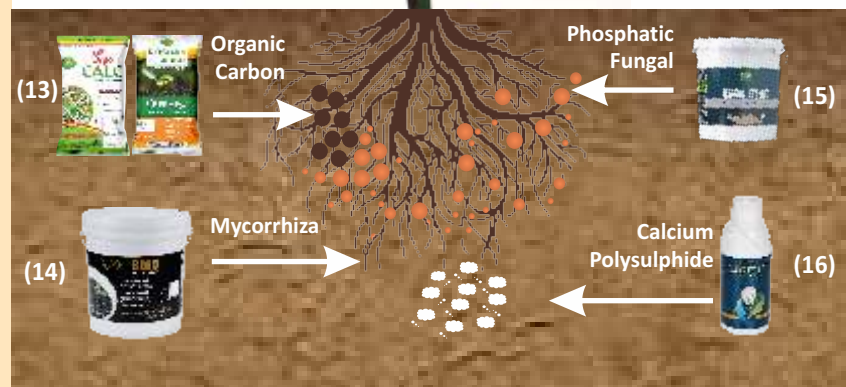
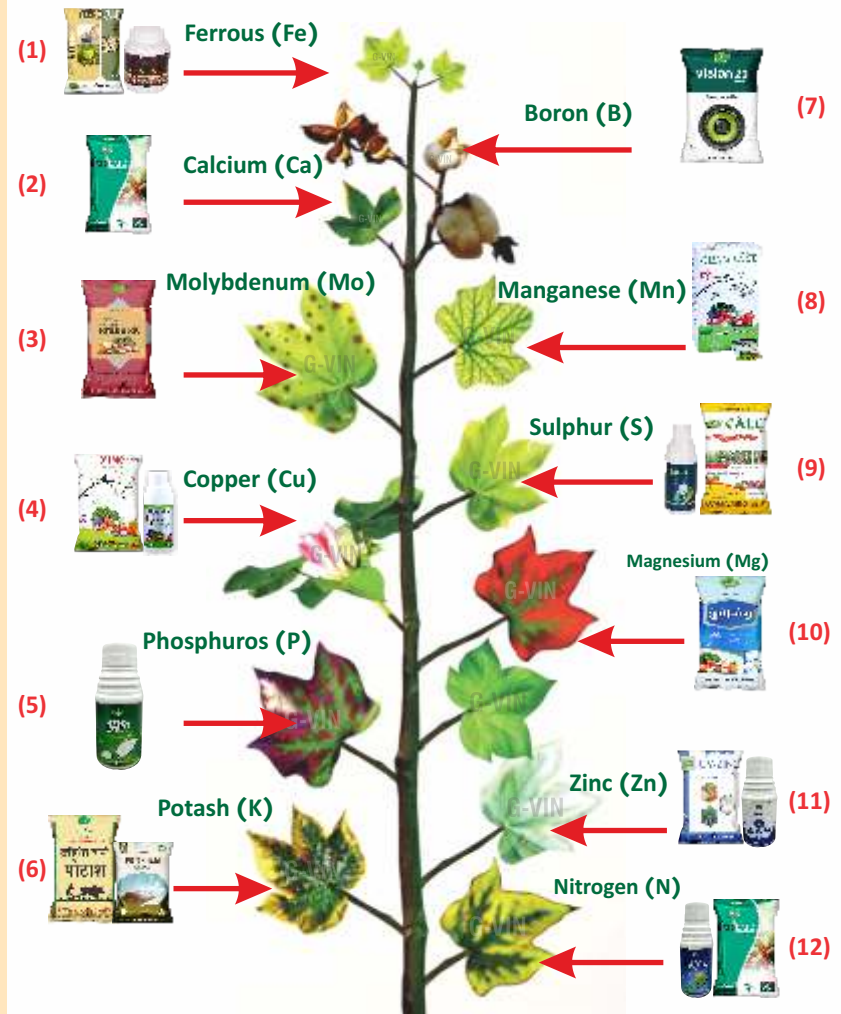
- Operative in agriculture field since 2010.
- Authorised by ISO 9001 : 2015 certified.
- Efficient and Quality Products that give farmers more production at lower cost.
- Products that differ from other traditional fertilizers and give excellent results.
- Experienced team of experts in agriculture for decades.
- Products that have passed in quality test in field and laboratory.

G-VIN KRUSHI LINK

- Seeds prepared with recommendation of agri scientists.
- indigenous, hybrid and researched variety of seeds for maximum yield.
- Best variety of wheat, cotton, castor, sesame, cumin, mustard, mung and millets.
- Seeds produced under the constant observation of experts.
- Reliable seeds from experienced farmers for many years.

NUTRITION DEFICIENCY IN PLANT AND SOLUTION BY G-VIN PRODUCTS

- (1) FERROSULF, CHALLENGE PRO
- (2) CALCIUM NITRATE
- (3) G-VIN KRUSHI KIT
- (4) ZINK SPARK, SIGNATURE
- (5) DAPG
- (6) JIVANT BIO POTASH, POTASHAM
- (7) VISION-20
- (8) CHALLENGE
- (9) SUPERCALC, LIGHT PRO
- (10) GV MAG
- (11) GV-ZINC, AUXIN
- (12) NITROCALC, GVUREA
- (13) ORGOCALC, POSHAN AMRUT
- (14) BLACK BOLD
- (15) ROCKSTAR
- (16) LIGHT PRO





SOIL NUTRIENT BIO FERTILIZER

SUPER CALC[®]

Elements : PSF (1×10^6 Spores/gm.), Silica, Sulphur, Calcium, Zinc, Magnesium, Ferrous, Copper, Boron, Manganese, Amino and Humic acids.

Packing : 25 kg (laminated bag)

Dose : 25 to 50 kg / Acre

Usage : Apply as Base or Supplementary fertilizer in any Crop.

Advantages of using Super Calc

- 1) The inclusion of elements other than N.P.K. relieves the hustle of adding different elements to the Soil.
- 2) Controlling the pH Score makes the soil more Fertile and Productive.
- 3) The granular structure and the water dissolving properties are very useful in the development and nutrition of Plants in a very short time.
- 4) Nutrient rich grains, easy to use, low cost and savings in farming costs.
- 5) The PSF bacteria in the supercalc make available the unavailable phosphorus in the soil.
- 6) Supercalc is the best cure to restore soil fertility for decades ago.



BLACK BOLD®

- Element :** Endo and Acto Mycorrhiza
(60 spores/1200 IP/gm.), Humic,
Fulvik, Amino acids, Sea-weed, Protein.
- Packing :** 2.5 kg (Jar), 5 kg (Pouch), 6 kg and 12
kg (Bucket).
- Dose :** 6 to 12 kg / Acre
- Consumption :** Apply as Base or Supplementary
fertilizer in any Crop.

Advantages of using Blackbold

- 1) Mycorrhiza develops the main roots and fibrous roots of the plant.
- 2) Maximum increase in the number of new branches, flowers and fruits of the plant.
- 3) Helps plants to survive in water scarcity and unfavourable atmosphere.
- 4) Replenishes the carbon in the soil by controlling the pH score.
- 5) Mycorrhiza helps in absorbing phosphorus and essential micronutrients by keeping its symbiosis associated with the roots of the plant.
- 6) Mycorrhiza promotes crop growth by producing various hormones and acids during its physiological process.

SOIL NUTRIENT BIO FERTILIZER



- Element :** Ferrous (19%) + Sulphur (12%)
- Packing :** 3 kg (Pouch)
- Dose :** 3 to 6 kg / Acre, 100 grams / pump (for peanuts only)
- Usage :** Apply as Base or Supplementary fertilizer in any Crop.

Advantages of using Ferrosulf

- 1) Increases leaf chlorophyll and maintains leaf greenness, especially in the groundnut crop.
- 2) Ferrosulf removes yellowing due to ferrous deficiency and increases oil content in groundnut.
- 3) Increase the action photosynthesis and increase the food uptake power of plants.
- 4) It is necessary to use 'Ferrosulf' in food crops to eliminate iron deficiency in the human diet.

Note : For spraying in crops other than groundnut, use as recommended by the company officer.



FERRO/SULF EXTRA

- Element :** Ferrous (19%), Sulphur (12%), Citric acid (100 gm.)
- Packing :** 1.100 kg (Pouch)
- Dose :** 100 gm. + 10 gm. / Pump for Peanut
- Usage :** Apply as spray dose of 1 kg + 100 gm. as per the requirement.

Advantages of using Ferrosulf Extra

- 1) It makes the completion of iron and citric acid in the crop.
- 2) Maintains the greenness of the leaves by increases the green particles of the leaves in the plant, especially in groundnut crops removing the yellowness found due to the deficiency of ferrous, oil seeds combine oil in the crops.
- 3) Increase the action photosynthesis and increase the food uptake power of plants.
- 4) It is necessary to use 'Ferrosulf' in food crops to eliminate iron deficiency in the human diet.

Note : For spraying in crops other than groundnut, use as recommended by the company officer.

SPRAY/SOIL NUTRIENT



SOIL NUTRIENT BIO FERTILIZER

ROCK STAR

Element : 1) Granules PSB (1×10^7 spores/gm.), secondary and micro elements, 2) 500 ml : Azetobacter (1×10^8 /ml), PSB (1×10^8 /ml), KMB (1×10^8 /ml) various acids, and Hormones.

Packing : 10 kg (9.5 kg + 500 ml)

Dose : 10 kg/ Acre

Usage : Apply as Base or Supplementary fertilizer in any Crop.

Advantages of using Rockstar

- 1) Makes unavailable NPK available in the soil and makes it useful to plants.
- 2) Due to the presence of secondary and micro nutrients and various acids and hormones excellent results are obtained.
- 3) Controlling the pH score makes the soil more fertile and productive.
- 4) Maximum increase in the number of new branches, flowers and fruits of the plant.
- 5) The immunity of the plant is enhanced by preventing the wasp, fruit or leaf from falling off.



GVIN DRIP KIT

Element : Potasham – 5 Kg, GVMag – 10 Kg,
Challenge Plus – 250 gram,
Challenge Pro – 250 gram, Vision – 250
gram, Carbon 95 – 250 gram.

Packing : 16 Kg. (Corrugated box)

Dose : 1 Kit / Acre

Usage : Apply as a drip to any crop

Advantages of using DRIP KIT

- 1) Drip Kit contains essential and important secondary and micronutrients, which are readily available for the crop.
- 2) Improves all kinds of defects arising due to deficiency of secondary and micro elements.
- 3) Increases crop quality and yield by giving healthy growth to the crop.
- 4) The carbon-95 in the drip kit is the main source of organic matter in the soil, It Helps the beneficial bacteria to grow faster in a favorable environment.





SOIL NUTRIENT



Included Products : Supercalc-25kg, GV-Zink 3kg,
Black Bold - 5kg, Ferrosulf - 3kg,
Nitrocalc - 1kg, Vision - 250gm.

Packing : 37.25 kg (Laminated bag)

Dose : 1 Kit / Acre

Usage : Apply as Base or Supplementary
fertilizer in any Crop.

Advantages of using KRUSHI KIT

- 1) The secondary elements, micronutrients and various acids and hormones required for the crop are contained in a single kit, enabling the crop to produce high-quality produce.
- 2) Useful in every crop including Kharif, Rabi, semi winter, vegetables, horticulture, fruits and flowers in Gujarat.
- 3) Regarding all the products included in the kit, understand the benefits according to the product given in the catalog.



Included Products : Zink spark - 5kg, Black Bold
5kg, GV Mag- 10kg, Ferrosulf - 3kg,
Jivant PSF - 200gm.

Packing : 23.2 kg (Recycle bag)

Dose : 1 Kit / Acre

Usage : Apply as Base or Supplementary
fertilizer in any Crop.

Advantages of using AADHAR KIT

- 1) The secondary elements, micronutrients and various acids and hormones required for the crop are contained in a single kit, enabling the crop to produce high-quality produce.
- 2) Useful in every crop including Kharif, Rabi, semi winter, vegetables, horticulture, fruits and flowers in Gujarat.
- 3) Regarding all the products included in the kit, understand the benefits according to the product given in the catalog.



Element : Carbon (14%), Nitrogen (0.5%), Phosphorus (0.5%), Potash (0.5%), Calcium, Magnesium, Sulphur.

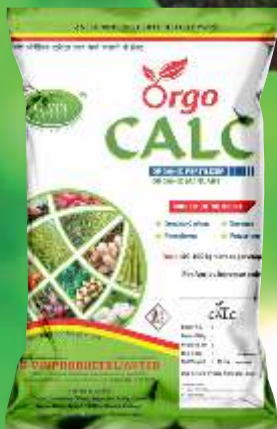
Packing : 50 kg (Laminated bag)

Dose : 50 to 100 kg / Acre

Usage : Apply as Base or Supplementary fertilizer in any Crop.

Advantages of using ORGO CALC

- 1) This product is made with a scientific approach taking into account the soil conditions.
- 2) Increases the efficiency of chemical fertilizers by replenishing carbon in the soil.
- 3) Increases the productivity of the plant helps in producing quality produce.
- 4) By controlling the pH score it is able to give fertile and excess production.
- 5) The organic matter in Orgo Calc provides a conducive environment for the beneficial bacteria in the soil to grow faster.



JIVANT BIO N.P.K.

Element : CFU/gm - NFB (1×10^7), PSB (1×10^7)
KSB (1×10^7) + Other Natural
Ingredients

Packing : 50 kg (Laminated bag)

Dose : 50 to 100 kg / Acre

Usage : Apply as Base or Supplementary
fertilizer in any Crop

Advantages of using JIVANT BIO N. P. K.

- 1) By fixing the nitrogen in the air, it makes the unavailable phosphorus and potash available inside the earth for release.
- 2) Promotes healthy development of crop roots, flowers and fruits.
- 3) Promotes sustainable agriculture by reducing dependence on chemical fertilizers.
- 4) It contributes significantly to maintaining ecological balance by increasing soil fertility in the long term.
- 5) Being organic, there is no leaching and wastage of nutrients.



जीवंत BIO POTASH

- Element :** Potassium Mobilizing Bacteria (CFU: 5×10^7 cells/gm), Other Natural Ingredients
- Packing :** 50 kg (Laminated bag)
- Dose :** 50 to 100 kg / Acre
- Usage :** Apply as Base or Supplementary fertilizer in any Crop

Advantages of using JIVANT BIO POTASH

- 1) Makes unavailable Potash available in the soil and makes it useful to plants.
- 2) N, P, Ca, Mg, S, Zn, Fe, give dynamism to such elements and increase the absorption by the crop.
- 3) Potassium mobilizing bacteria promotes the growth of crops by producing various hormones and acids during their physiological process.
- 4) Jivant Bio Potash does not disturb the balance of land and the environment.



**SOIL NUTRIENT
BIO FERTILIZER**



GV-ZINC

Element : Zinc (33%) + Sulphur (15%)

Packing : 1 kg (Jar), 3 kg (Pouch)

Dose : 3 to 6 kg / Acre

Usage : Apply as a base or supplementary fertilizer mixed with other fertilizers.

Advantages of using GV - ZINC

- 1) In order for any plant to get the nutrients it needs from the soil for its own growth, it is necessary to make endocrines in the plant. Zinc is very useful in making such endocrine.
- 2) It plays a supporting role in the digestion process of nitrogen taken by the crop.
- 3) Plays an important part in taking high-quality produce.
- 4) Zinc helps in the conversion of starch into sugars.
- 5) Zinc is an essential element for public health.



ZINCspark

- Element :** Zinc (5%), Ferrous (2%), Boron (0.5%),
Copper (0.2%), Manganese (0.5%)
- Packing :** 2 kg (jar), 5 kg (Pouch), 10 kg (Bag),
25 kg (Laminated bag)
- Dose :** 10 to 16 kg / Acre
- Usage :** Apply as Base or Supplementary
fertilizer in any Crop

Advantages of using ZINC SPARK

- 1) Prevents flower beetles from falling out of the plant and the fruit from rupturing.
- 2) Prevents yellowing or reddening of plants due to micro nutrient deficiencies, maintains plant greenery.
- 3) It eliminates the deficiency of microorganisms and keeps the plants healthy and promotes overall growth.
- 4) It is a mixture of micronutrients in form of sulphate that plant can quickly take.
- 5) The grade is indicated by the Gujarat government by studying the land of Gujarat.

SOIL NUTRIENT
GUJARAT GOVERNMENT GRADE-5





SOIL NUTRIENT ORGANIC MANURE

POSHAN amrut

- Element :** Carbon (14%), Nitrogen (0.5%), Phosphorous (0.5%), Potash (0.5%), Secondary and Micronutrients.
- Mix :** A balanced combination of Press mud, poultry compost, tobacco and bone meal powder.
- Packing :** 50 kg (Laminated bag)
- Dose :** 5 to 10 Bag / Acre
- Usage :** Apply in any crop in a way that goes underground in the base or supplementary manure.

Advantages of using POSHAN AMRUT

- 1) Continuous use of Poshan Amrut makes the soil organic, rich and loose.
- 2) Helps to increase soil moisture storage capacity and balance pH.
- 3) Provides natural vegetative growth to the plant gives pure, organic yield.
- 4) Provides sufficient carbon in the soil to increase the efficiency of chemical fertilizers.



GV-MAG

MAG - 90

Element : Magnesium (9.6%), Sulfur (12%)
Packing : 1 kg (Pouch), 25 kg (Laminated bag)
Dose : 100 gm. / Pump, 25 kg / Acre
Usage : Apply as Base or Supplementary fertilizer, drip, spray in any Crop

Advantages of using GV - MAG or MAG - 90

- 1) Plays an important role in making chlorophyll needed for plants.
- 2) Accelerates the transport of essential elements in different parts of the plant and helps in the action of photosynthesis.
- 3) Plays a role in supplementing the metabolism of nutrients taken from the soil by plants.
- 4) Makes composition in fruit-flowering, fatty acids and oils and provides required starch and sugars to plant.

SPRAY/DRIP/SOIL NUTRIENT





SPRAY/DRIP/SOIL NUTRIENT GUJARAT GOVERNMENT GRADE-4

CHALLENGE

Element : Zinc (6%), Ferrous (4%), Boron (0.5%),
Copper (0.5%), Manganese (1%)

Packing : 18 gm (pouch), 250, 500 gm (Dabba)

Dose : 18 gm/pump, 250 gm/ Acre

Usage : Apply as spray or drip in any crop

Advantages of using CHALLENGE

- 1) Pouch size specially designed for pumps so that can be easily used in sprays.
- 2) Keeps plants healthy by eliminating micro nutrient deficiencies.
- 3) Prevents flower beetles from falling out of the plant and the fruit from rupturing.
- 4) Prevents yellowing or reddening of plants due to micro nutrient deficiencies, maintains plant greenery.
- 5) Being in chelated form so the crop can use it very quickly and easily.
- 6) The grade is indicated by the Gujarat government by studying the land of Gujarat.



GROWTH

Element : Azetobacter (1×10^8 / ml), PSB (1×10^8 / ml), KMB (1×10^8 / ml), Amino Acid, Fulvik Acid, Humic Acid, Sea-weed extract and Various Hormones.

Packing : 25 ml (pouch), 250, 500 ml, 1 liter (bottle)

Dose : 25 ml / pump, 500 ml / acre (Drip or diluting with water)

Usage : Mix with any medicine and apply to any crop by spray, drip or or by Fluid irrigation with water.

Advantages of using GROWTH

- 1) Maximizes the number of new branches, fruits and flowers on the plant.
- 2) Due to adverse weather conditions or inadequate nutrition, the plant's immunity is enhanced by preventing wasps, fruit, snails or leaves from falling off the plant.
- 3) Enhances the process of photosynthesis, speeds up the feeding process of plants and promotes the overall growth of plants.
- 4) Using this by irrigation makes the unavailable form of NPK elements in the soil available.

SPRAY/DRIP/SOIL NUTRIENT LIQUID CONSORTIA





SPRAY/DRIP/SOIL NUTRIENT



CHALLENGE^{PRO}

Element : Chelated Ferrous (12%)

Packing : 250, 500 gm (Dabba)

Dose : 250 gm / Acre, 15 to 20 gm / Pump

Usage : Apply as spray or drip in any crop

Advantages of using CHALLENGE PRO

- 1) Increases the efficiency of Nitrogen and Phosphorus.
- 2) Removes yellowing of ferrous deficiency in the groundnut and increases oil content.
- 3) Acts as a catalyst and oxygen carrier in the formation of chlorophyll in plants.
- 4) Helps in the formation of enzymes associated with the action of respiration.
- 5) Being in chelated form so the crop can use it very quickly and easily.

Note : For spraying in crops other than groundnut, use as recommended by the company officer.

CHALLENGE⁺

Element : Chelated Zinc (12%)

Packing : 250, 500 gm (Dabba)

Dose : 250 gm / Acre, 15 to 20 gm / Pump

Usage : Apply as spray or drip in any crop

Advantages of using CHALLENGE PLUS

- 1) Zinc is an important component of various enzymes, which are responsible for performing various metabolic functions.
- 2) Converts starch into sugars.
- 3) Makes endocrine associated with plant growth.
- 4) Activates the enzymes responsible for protein synthesis.
- 5) A constant supply of zinc is essential for proper growth and maximum yield of the crop.
- 6) Being in chelated form so the crop can use it very quickly and easily.



POTASHAM

Element : Potassium (23%), Magnesium (11%), Sulphur (15%)

Packing : 1 Kg , 5Kg (Pouch)

Dose : 100 gm/ Pump, 5 to 10 Kg/ Acre

Usage : Apply as Base or Supplementary fertilizer, drip, spray in any Crop.

Advantages of using POTASHAM

- 1) Potassium, magnesium and sulphur, the three elements essential for crop growth and production, are easily supplemented.
- 2) Since three nutrients are involved in a single particle, the crop is supplemented with nutrients in a uniform manner.
- 3) The property of being easily soluble in water and becomes immediately available in the overall growth of plants.
- 4) Due to its chloride-free and neutral pH score, it can be used in both acetic and alkaline soils.



Carbon 95

Element : Carbon (14%), Nitrogen (0.5%),
Phosphorus (0.5%), Potash (0.5%)

Packing : 250, 500 gm (Dabba)

Dose : 25 gm/ pump, 250 gm/ Acre

Usage : Apply as spray or drip in any crop.

Advantages of using CARBON-95

- 1) Carbon is the main source of organic matter in the soil which provides a favourable environment for beneficial bacteria to grow rapidly.
- 2) Supplies carbon in the soil by controlling the pH score.
- 3) Increases the efficiency of chemical fertilizers.
- 4) Maintains soil moisture storage strength and fertility.
- 5) Maintains the balance of soil and water structure and develops the root zone of the plant.

SPRAY / DRIP / SOIL NUTRIENT





SPRAY/DRIP/SOIL NUTRIENT

vision 20

Element : Calcium (18.5%), Nitrogen (15.5%)

Packing : 1 Kg (Pouch)

Dose : 100 gm / Pump, 12-15 Kg / Acre

Usage : Apply as Base or Supplementary fertilizer, drip, spray in any Crop

Advantages of using NITRO CALC

- 1) It is important to increase the process of seed production and photosynthesis.
- 2) Adequate supply of calcium and nitrogen required by the crop.
- 3) Plays an important role in controlling the pH score of the soil.
- 4) Strengthens the roots of the plant and maintains the goal of production even in adverse conditions.



NitroCALC

SPRAY / DRIP / SOIL NUTRIENT



Element : Potassium (23%), Magnesium (11%), Sulphur (15%)

Packing : 1 Kg , 5Kg (Pouch)

Dose : 100 gm/ Pump, 5 to 10 Kg/ Acre

Usage : Apply as Base or Supplementary fertilizer, drip, spray in any Crop.

Advantages of using POTASHAM

- 1) Potassium, magnesium and sulphur, the three elements essential for crop growth and production, are easily supplemented.
- 2) Since three nutrients are involved in a single particle, the crop is supplemented with nutrients in a uniform manner.
- 3) The property of being easily soluble in water and becomes immediately available in the overall growth of plants.
- 4) Due to its chloride-free and neutral pH score, it can be used in both acetic and alkaline soils.





SPRAY / DRIP / SOIL NUTRIENT GUJARAT GOVERNMENT GRADE - 1

Signature

Element : Zinc (4%), ferrous (2%), copper (0.3%), boron (0.5%), manganese (0.5%)

Packing : 500 ml and 1 liter (bottle)

Dose : 1-2 liter / acre, 30-40 ml / pump

Usage : Apply as spray, drip or by Fluid irrigation with water in any crop

Advantages of using SIGNATURE

- 1) Keeps the plant healthy by eliminating the deficiency of essential micronutrients.
- 2) Prevents flower beetles from falling out of the plant and the fruit from rupturing.
- 3) Prevents yellowing or reddening of plants due to micro nutrient deficiencies, maintains plant greenery.
- 4) Being completely soluble in water, it is easy to use in the sprinkler and drip method.
- 5) The grade is indicated by the Gujarat government by studying the land of Gujarat.



Auxin

SPRAY/DRIP NUTRIENT



Element : Zinc (39.5% SC)

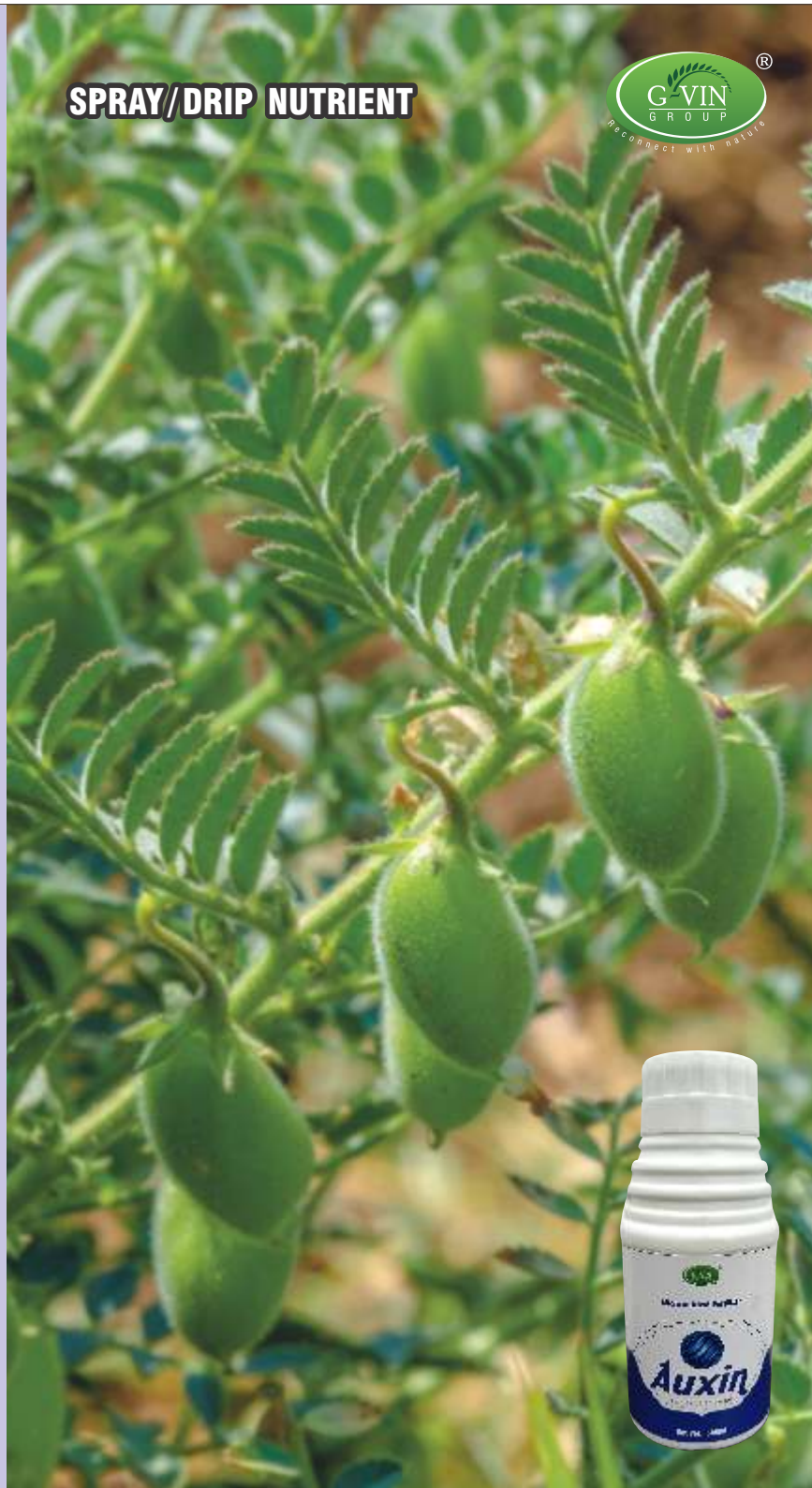
Packing : 500 ml (bottle)

Dose : 0.75 to 1.5 ml / Litre, 250 to 300 ml /
Acre (Drip)

Usage : Apply as spray or drip in any crop

Advantages of using AUXIN

- 1) Auxin is a micro nutrient zinc-containing suspension concentrate liquid.
- 2) Which has high concentrations of zinc.
- 3) Activates the enzymes responsible for protein synthesis.
- 4) Promotes nitrogen metabolism and produces protein and starch.
- 5) Zinc is involved in the formation of chlorophyll and carbohydrates and promotes the formation of Auxin so it regulates plant growth.
- 6) Provides more zinc to plants compared to conventional zinc formulations.





SPRAY HORMONES

BRASS-10

Element : Brassinolide (10000PPM)

Packing : 50 ml, 100 ml (bottle)

Dose : 8 to 10 ml / pump

Usage : Apply as spray in any crop

Advantages of using BRASS - 10

- 1) Brass-10 is a plant hormone belonging to the polyhydroxysteroids group.
- 2) Brass - 10 is a high concentrate solution of 10000 ppm.
- 3) Increases flowering wasps in the crop and prevents improper vegetative growth of the plant.
- 4) Increases the oxidation process in plants and accelerates the process from plant roots to the top.
- 5) Controls various processes of plants such as cell division, cell proliferation as well as abiotic and biotic response process.



IMMUNITY⁺

Element : Amino acids, Atonic, Natka, Auxin, 6BA, proteins and vitamins.

Packing : 20 ml (Bottle)

Dose : 5 ml / pump

Usage : Apply as Spray in any crop.

Advantages of using IMMUNITY +

- 1) Immunity + is a Nano technological product that easily meets the needs of plants such as various hormones, proteins, vitamins and acids.
- 2) The nutrients in Immunity + are absorbed very easily by the leaves as they are in the form of microscopic particles, so that excellent results are obtained.
- 3) Safe for crops and the environment than traditionally sprayed elements.
- 4) Increases the yield and quality of all types of fruit, flowers, in the crop.
- 5) Increases the process of photosynthesis and maintains the texture and greenness of the crop for a long time.

SPRAY NUTRIENT NANO TECHNOLOGY





SPRAY HORMONES

Glucon-6

Element : 6BA (Benzylaminurine)

Packing : 50 gram (Dabba)

Dose : 5 gm / pump, 50 gm / acre

Usage : Apply as Spray

Advantages of using GLUCON 6

- 1) 6BA is a synthetic cytokinin of the adenine group.
- 2) Increases the number of flowers by encouraging cell division.
- 3) Helps in the process of fruiting from flower in any crop.
- 4) The number of flowers and fruits increases and the size of the fruit produced increases.
- 5) Promotes cell division and expansion.



- Element :** Acto and Endo Mycorrhiza (60 spores / 1200 IP / gm)
- Packing :** 100 gm (Dabba)
- Dose :** 100 gm/ acre
- Usage :** Apply by drip, by drenching or mixed with compost/organic compost/shell / sand near the root area in standing crop.

Advantages of using JIVANT MYCO

- 1) Develops main roots and fibrous roots.
- 2) Increases the ability of plants to with stand adverse weather conditions.
- 3) Increases the absorption capacity and motility of nutrients taken by plants.
- 4) Increases soil moisture storage capacity to provide adequate moisture to the plant in adverse conditions.
- 5) Gives more yield and higher quality product.
- 6) Mycorrhiza helps in absorbing phosphorus and essential micronutrients by keeping its symbiosis associated with the roots of the plant.





SPRAY / DRIP / SOIL NUTRIENT

HUMIFLOW

Element : Humic Acid (12%), PSB (1×10^8 /ml)

Packing : 500 ml, 1 litter (bottle), 5 litter (can), 15 Litter (Coke Can)

Dose : 1 litter / acre, 30 ml / pump

Usage : Apply as as Spray, by drip or by diluting with water.

Advantages of using HUMIFLOW

- 1) Maintains the balance of weak / heavy soil-water structure and develops the root zone of the plant.
- 2) Adequate carbon in the soil enhances plant biological processes and makes the soil more fertile.
- 3) Plants can easily use the nutrients contained or supplied in the soil as food.
- 4) Sustains plants in hostile environments.
- 5) The PSB in the humiflow makes the unavailable phosphorus in the soil available for crop and regulates the pH score.



LIGHT^{PRO}

SPRAY/DRIP/SOIL NUTRIENT



- Element :** Sulfur (40%), Calcium
- Packing :** 500 ml, 1 litter (bottle), 5 litter (can), 15 Litter (Coke Can)
- Dose :** 1 litter / acre, 30 ml / pump
- Usage :** Apply as a spray, by drip or or by Fluid irrigation with water

Advantages of using LIGHT PRO

- 1) Light Pro is a high density liquid sulfur containing calcium.
- 2) Cuts the salts in the soil and water and makes the soil rich and soft.
- 3) Conducts excess moisture that accumulates near the roots of plants.
- 4) Effective control of soil borne fungi.
- 5) High Density Light Pro adds starch, sugars, oils, vitamins to plants by converting the unavailable elements in the soil into available form.
- 6) Provides calcium and sulfur required for the crop.





STICKER - SPREADER

Chipku

Element : Sticker & Spreader (Silicone Based)

Packing : 50 ml, 100 ml (Bottle)

Dose : 3 to 5 ml / Pump

Usage : Mix with disinfectant or herbicide.

Advantages of using CHIPKU

- 1) Agrochemicals spread uniformly and rapidly on the leaves.
- 2) Reduces losses by reducing the erosion of agrochemicals from leaves due to rainfall.
- 3) Increases the effectiveness of agrochemicals and reduces the amount of spray.
- 4) Can be mixed with any agro chemicals as it has high consistency.
- 5) Being a silicone-based material, it is more effective than carbon-based spreaders and stickers.



Chipku *mild*

Element : Sticker & Spreader (Silicone Based)

Packing : 250 ml, 500 ml, 1 Litre (Bottle)

Dose : 20 to 25 ml / Pump

Usage : Mix with disinfectant or herbicide.

Advantages of using CHIPKU MILD

- 1) Agrochemicals spread uniformly and rapidly on the leaves.
- 2) Reduces losses by reducing the erosion of agrochemicals from leaves due to rainfall.
- 3) Increases the effectiveness of agrochemicals and reduces the amount of spray.
- 4) Can be mixed with any agro chemicals as it has high consistency.
- 5) Being a silicone-based material, it is more effective than carbon-based spreaders and stickers.

STICKER-SPREADER



SPRAY NUTRIENT

GVUREA

Element : Urea ammonium nitrate (32%)

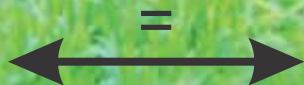
Packing : 500 ml (Bottle)

Dose : 4 to 5 ml / Litre

Usage : Apply by Spray

Advantages of using GVUREA

- 1) Successfully meets the nitrogen requirement of the crop and accelerates the process of photosynthesis.
- 2) Due to better efficiency and effectiveness on the crop, the consumption of urea used by conventional method can be reduced by more than 50%.
- 3) The use of GVUREA against conventional urea has been shown to be helpful in improving groundwater quality and reducing global warming.
- 4) Crops take normal urea in the form of iron, while Nano urea in the form of particulate matter releases nitrogen that reaches inside the plant so that the plant can absorb the nitrogen better.



DAPG

SPRAY NUTRIENT



Element : Nitrogen (10%), Phosphorus (34%)

Packing : 500 ml (Bottle)

Dose : 4 to 5 ml / Litre

Usage : Apply by Spray

Advantages of using DAPG

- 1) Successfully meets the Nitrogen and Phosphorus requirements of the crop.
- 2) Increases crop growth, yield and quality and increases efficiency in utilization of other nutrients.
- 3) Due to better efficiency and effectiveness on the crop, the use of phosphatic fertilizers used by conventional method can be reduced.
- 4) The nutrients in DAPG are in the form of microscopic particles and are easily absorbed by the leaves, resulting in excellent results.
- 5) Safe for crops and the environment than traditionally sprayed elements.



Element : Potassium (50%)
Packing : 500 ml (Bottle)
Dose : 4 to 5 ml / litre, 500 ml / acre
Usage : by spray , by drip.

Advantages of using KOTASH

- 1) Healthy development of seeds and fruit enables to high yield.
- 2) A number of biological and chemical processes occurring in plants supply needed potassium for increase plant growth and product quality thing.
- 3) Activates enzymes responsible for specific functions.
- 4) Helps to increase plant immunity against weather changes, diseases and nematodes.
- 5) Since the nutrition available in Kotash is in the shape of ultra fine particles it's far very effortlessly absorbed via the leaf.



LIQUID Nitro CALC

Element : Nitrogen (10%), Calcium (15%),
Magnesium (2%)

Packing : 500 ml (Bottle)

Dose : 4 to 5 ml / Litre

Usage : Apply by Spray

Advantages of using LIQUID NITROCALC

- 1) Nitrogen, calcium and magnesium are the three elements required for plants.
- 2) Nitrogen plays an important role in new leaf formation, calcium plays in cell wall and plant formation and magnesium in chlorophyll formation.
- 3) It helps to maintain the production target even in adverse situations.
- 4) Calcium promotes proper formation and structure of fruits.
- 5) While magnesium improves the color and taste of fruits.

SPRAY / SOIL NUTRIENT





SPRAY / SOIL NUTRIENT

E-BOR

Liquid Boron

Element : Boron Ethanolamine (10%)
Packing : 500 ml (Bottle)
Dose : 2 to 3 ml / Pump, 500 ml/acre
Usage : by spray, by drip

Advantages of using E BOR

- 1) It functions to produce fruit, seeds and juice from the flower stage.
- 2) Plays an important part in the structure of the fruit.
- 3) It acts as an important link to obtain uniform quality of yield and production.
- 4) Prevents fruit-blossoms from falling or cracking and gives quality produce.
- 5) Promotes proper plant growth by regulating hormone levels.
- 6) Helps in the formation of proteins and amino acids for plants.
- 7) E-Bor is very useful for cell division, protein synthesis and nitrogen metabolism.



BIO NEMATICIDE

जीवंत POCHONIA

Biological Ingredients : Verticillium
chlamydosporia 1.0% W.P. (CFU : 2×10^6 / gm)

Packing : 1 Kg (Pouch)

Dose : 1 Kg / Acre

Usage : mixed with organic compost or manure
or sand and applied in crop.

Advantages of using JIVANT POCHONIA

- 1) This is a biological nematicide that eats nematodes eggs and destroys female reproductive organs by infesting them.
- 2) In addition to effective control of nematodes, it also plays an important role in crop growth and development.
- 3) Effectively controls crop nematodes such as insect shaped, root cutters etc...
- 4) Low cost compared to chemical nematicides.
- 5) Nematodes cannot build up their immune system with the use of JIVANT POCHONIA.



जीवंत BEAUVERIA

Biological Ingredients : Beauveria Bassiana

1.15% W.P. (CFU: 1×10^8 / gm)

Packing : 1 Kg (Pouch)

Dose : 50 to 60 Grams / Pump, 1 to 2 Kg. / Acre

Usage : Drenching or spraying at the base or supplement of any crop based on the target organism.

Advantages of using JIVANT BEAUVERIA

- 1) Beauveria Bassiana is an Entomopathogenic fungus that controls a wide range of insects and caterpillars by acting as parasites.
- 2) It is a fungus-based biological pesticide that grows on the bodies of all types of caterpillars and insects, penetrates insects, and breaks down its structure to control it.
- 3) Pathogenic fungi cannot build up their immunity using JIVANT BEAUVERIA.
- 4) Low cost compared to chemical de worming.
- 5) Mix Chipku 3 ml / pump and sprinkle for better result in sprinkling.

BIO INSECTICIDE





BIO FUNGICIDE

जीवंत *Pseudomonas*

Biological Ingredients : Pseudomonas
Fluorescens 1.0% W.P. (CFU : 10×10^8 / gm)

Packing : 1 Kg (Pouch)

Dose : 1 Kg/ Acre

Usage : Manure, mixed with organic compost, flour or sand and applied in standing crop.

Advantages of using JIVANT PSEUDOMONAS

- 1) Effective control of soil borne fungi.
- 2) This fungus produces certain types of substances and antibiotics to control the biological control of various fungi.
- 3) The substances produced during the physiological process promote the growth of plants.
- 4) The use of JIVANT PSEUDOMONAS does not pollute the soil, water and air so is safe and secure for the environment.
- 5) Low cost compared to chemical de worming.
- 6) Pathogenic fungi cannot build up their immunity using JIVANT PSEUDOMONAS.



जीवंत TRICHO

Biological Ingredients : Trichoderma Viride 1.5%
W.P. (CFU Count 2×10^6 / gm. Min)

Packing : 1 Kg (Pouch)

Dose : 1 to 2 Kg / Acre

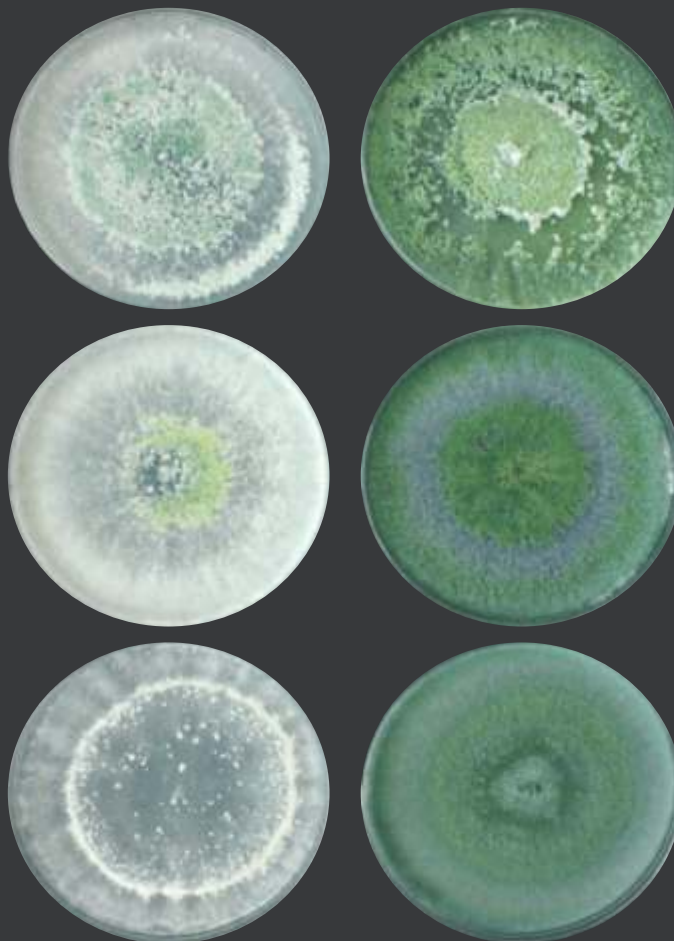
Usage : Manure, mixed with organic compost,
flour or sand and applied in standing crop

Seed Treatment : 10 gm / Kg

Advantages of using JIVANT TRICHO

- 1) Protects plants from disease by effective biological control from Sclerotium, Rolfii, Rhizoctonia, Fusarium, Pythium, Phytophthora etc.
- 2) Low cost compared to chemical de worming.
- 3) Pathogenic fungi cannot build up their immunity using JIVANT TRICHO.

BIO FUNGICIDE





SOIL NUTRIENT

Sulfex-90

Sulphur 90% Powder

Element : Sulphur 90 % Powder

Packing : 3 kg (Pouch)

Dose : 3 kg/ acre

Usage : Mix with any fertilizer and apply.

Advantages of using SULFEX - 90

- 1) Supplies Sulfur to any crop. Sulfur is very important in the overall development of crops.
- 2) This protein plays an important role in the synthesis of enzymes and vitamins.
- 3) Increases shine and quality of the product.
- 4) Oilseeds increase the percentage of oil in crops, which enables the crop to produce more.
- 5) Sulfur is necessary for nitrogen digestion.



Ema Sword

INSECTICIDE



Element : Emamectin Benzoate (5 % SG)
Packing : 50, 100, 250 gram (Dabba)
Dose : 100 - 125 gm/acre, 8-10 gm/pump
Usage : Apply by foliar spray

Advantages of using EMASWORD

- 1) Protects the crop from damage caused by caterpillars in leaves, flowers and fruits.
- 2) Controls caterpillars in all types of crops.
- 3) Maintains the quality of crop production continuously.
- 4) Farmers do not need to use different pesticides due to controlling many types of caterpillars.
- 5) It gives longer result, hence the cost of cultivation is reduced.





RESEARCH WHEAT



Seed : Research Wheat Seed

Packing : 20 Kg (Bag)

Seed Rate : 40 Kg / Acre

Features of G-Vin 9 Wheat

- 1) A species with very dark green plants, which can with stand adverse weather and high winds.
- 2) 8 to 12 feet from a seed (tillering), the length of the stem is 6 to 9 inches.
- 3) More production due to 60 to 90 seeds in each stem.
- 4) More sweetness in food as grains contain more natural sugars.

NOTE : Provide balanced nutrition as per G-vin recommendation for further production.



GVIN-11

RESEARCH WHEAT SEED - SONLA SARBATI TUKDA

Seed : Research Wheat Seed

Packing : 20 Kg (Bag)

Seed Rate : 40 Kg/ Acre

Features of G-Vin 9 Wheat

- 1) Golden Sharbati Tukda Variety.
- 2) High quality research wheat seeds.
- 3) A species with very dark green plants, which can with stand adverse weather and high winds.
- 4) 8 to 22 feet (tillering) from one seed, plump stalks and maximum number of seeds in each stalk.
- 5) More sweetness in food as grains contain more natural sugars.

NOTE : Provide balanced nutrition as per G-vin recommendation for further production.

RESEARCH WHEAT



Let's save agriculture for next generation



G-VIN PRODUCTS LIMITED

206, Rajpath Avenue, Opp. Tapovan School, 150 Feet Ring Road,
Rajkot - 360004, Email : gvinproductsltd@gmail.com



Customer Care : 95102 82007

www.gvingroup.com